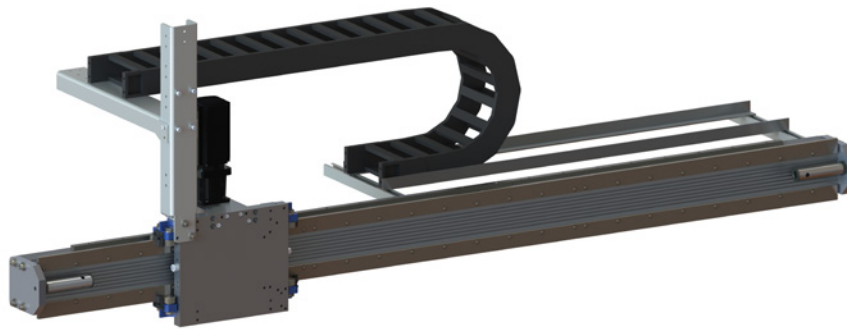


## SIZE 2

# LINEAR HORIZONTAL AXIS LHA-2



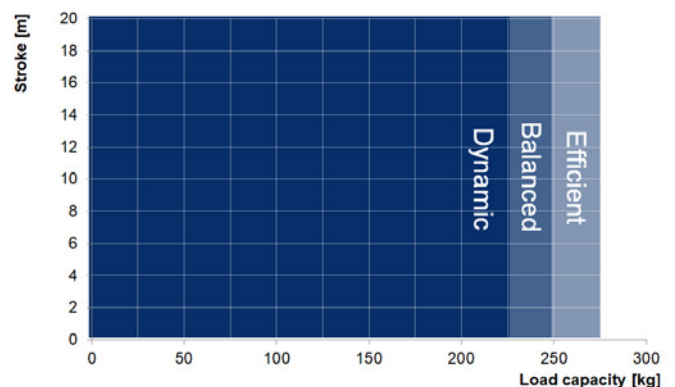
THE LHA-2 IS DESIGNED FOR HANDLING WEIGHTS OF UP TO 275 KG AND REACHES A MOVEMENT SPEED OF UP TO 4.5 M/S WITH ACCELERATION OF UP TO 6 M/S<sup>2</sup>.

IT IS IDEAL FOR TRANSPORTING, HANDLING FIXTURES, ATTACHING ADDITIONAL AXES OR AS A SEVENTH AXIS FOR A ROBOT.

THE RACK AND PINION SYSTEM ALLOWS THE TRANSMISSION OF LARGE FORCES AS WELL AS PRECISE POSITIONING. USING INTEGRATED T-NUT RAILS, THE SUPPORT ENABLES THE RACK AND ALL ATTACHED COMPONENTS TO BE POSITIONED FLEXIBLY DURING ASSEMBLY. THE LINEAR HORIZONTAL AXIS CAN BE EXTENDED TO OVER 20 M.

### LOAD CLASSES

- **Dynamic** ( $v = 4.5 \text{ m/s}$ ,  $a = 6 \text{ m/s}^2$ )  
with additional load of up to 225 kg\*
- **Balanced** ( $v = 3 \text{ m/s}$ ,  $a = 4.5 \text{ m/s}^2$ )  
with additional load of up to 250 kg\*
- **Efficient** ( $v = 2 \text{ m/s}$ ,  $a = 3 \text{ m/s}^2$ )  
with additional load of up to 275 kg\*



### MORE INFORMATION?

Do you require more detailed information or a CAD model of our product? Then please get in touch with our sales team.

[vertrieb@fibro-laepfle.de](mailto:vertrieb@fibro-laepfle.de)